

2023

Annual Report



Acknowledgement of Country

Gippsland Climate Change Network acknowledges the Gunaikurnai, Bunurong, Bidwell and Ngarigo-Monero, as the Traditional Owners of the country we operate in. We pay tribute to all first nations people, and we give respect to Elders past and present, as well as emerging leaders. We commit to working respectfully to honour their ongoing cultural and spiritual connections to the land and waters. We recognise the role and value of culture in our community.

UN Sustainable Development Goals

The 2030 Agenda for Sustainable Development, adopted by all United Nations Member States in 2015, provides a shared blueprint for peace and prosperity for people and the planet, now and into the future. At its heart are the 17 Sustainable Development Goals (SDGs), which are an urgent call for action by all countries – developed and developing – in a global partnership. GCCN is focusing on Goal 7: Affordable and clean energy and Goal 13: Climate action.



Partner Acknowledgement

We thank our partner organisations for their continued support for GCCN. It is only with partnerships and working together that we have a chance of reaching our vision for the future of Gippsland being carbon neutral by 2040.





Table Of Contents

OVERVIEW

- Acknowledgment of Country.....2
- UN Sustainability Goals.....2
- Project Partner Acknowledgement.....2
- Chair's Report.....4
- Vision and Mission.....5
- Meet the 2023 Board.....6
- Meet the 2023 Team.....7
- Activity Snapshot.....8

FINANCE

- Treasurer's Report.....9

GCCN PARTNERSHIPS

- Gippsland New Energy Conference.....10
- Gippsland Smart Specialisation.....12
- Gippsland Alliance for Climate Action(GACA).....13

GCCN INITIATIVES

Engage Gippsland

- Gippsland New Energy Engagement14
- Learning and Development/Social Benefit.....14
- Wellington Renewables Forum.....14
- Engagement on Transition.....15
- Gippsland New Energy Web Portal.....15
- Renewable Energy Demonstration Trailer16

Energise Gippsland

- EV Expos.....17
- Latrobe Valley Energy and Growth Fund.....18
- EV Chargers.....18

APPENDIX 1

- Auditors Report.....19

APPENDIX 2

- GCCN Financial Statements.....21



Chairs Report

Welcome to the GCCN Annual Report for 2023. This year, we have achieved several milestones in our organisation.

I am honoured to serve as Chair of GCCN with the support of a skilled executive team and an enthusiastic board. We have overseen significant achievements in delivering a diverse range of projects, which are detailed in this report.

We are grateful for the support of our volunteer board members, trusted advisors, project partners, members, and supporters. They have generously contributed their time and energy for the benefit of our community and working towards our vision of a low carbon Gippsland.

Our CEO, Darren McCubbin, has been instrumental in this year's success and in managing our expanded team and our extensive relationships with community, key stakeholders, new energy proponents and all levels of government.

The last twelve months have been momentous for GCCN and the transition to new energy in Gippsland. We have successfully hosted the second Gippsland New Energy Conference and gained a reputation as a trusted independent organisation that can deliver complex projects.

Looking ahead, we will continue to engage proactively with relevant parties on matters related to our core purpose, and to strengthen existing and new relationships.

We have confidence in our team and strategy to support a sustainable future for the organisation and to provide positive outcomes for the environment and community, both through our own and partnered initiatives. The challenge is significant, but the opportunities are enormous, and we are excited about the positive momentum we have achieved.

Carolyn Crossley
Chair GCCN

Darren McCubbin,
CEO
Michelle Isles,
New Energy
Alison Edgar,
Treasurer
Carolyn Crossley,
Chair





The Gippsland Climate Change Network

Our Vision

Gippsland is carbon neutral by 2040 with thriving communities, new industries, a resilient economy, healthy habitats, and sustainably managed resources.

Our Mission

Build partnerships, connect people with information and opportunities, support, and deliver climate-positive initiatives with social, economic, and environmental benefits.

Our Challenge

Engaging our community about the real and present threat of climate change impacts in Gippsland in ways that understand the science, promote partnerships, utilise our local expertise, and generate hope.

Who we are

Established in 2007, we are a Gippsland wide not-for-profit and registered charity driven mostly by a group of committed volunteers. The organisation is focused on connecting and collaborating with local communities, businesses, and government organisations around climate change awareness and solutions.

Our Principles

Gippsland's Culture and Country

We acknowledge the various Traditional Owners across Gippsland's six local government areas; the Gunaikurnai, Monero, Bidhawal, Bunurong, Boon Wurrung, Taungurung and Wurundjeri peoples, as well as all Aboriginal and Torres Strait Islander people living in our communities today. We recognise their continuing connection to land and the role they play in managing our shared resources.

Our Environment

We celebrate our diverse landscapes and share a sense of urgency for action to ensure that people and nature can both thrive. We need to reduce our greenhouse gas emissions, drawdown atmospheric carbon levels, and support the regeneration and sustainable management of all Gippsland's natural resources.

Inclusive Community

We believe that we are stronger together and that everyone can, and should, be a part of the solution. This means working with people and organisations with levels of commitment to climate change and finding the ways in which we can learn together.

The Need for Leadership

The climate challenges we all face are significant, so we aim to support our community and industry partners to increase climate literacy, build connections, and create stronger partnerships. In doing so, we can facilitate and deliver progressive initiatives across Gippsland and beyond.

Agile Organisation

We work in a space that is rapidly changing. Through our partnerships and connections, we can adapt to take advantage of opportunities that will enable us to have the biggest impact with the resources available to us.

Independent & Non-partisan Voice

We are a not-for-profit Incorporated Association powered by a dynamic group of committed volunteers supported by an experienced and enthusiastic team. We work with all levels of government but maintain our independence. We hold all political parties to the same standards: protecting our environment and building a better future for our communities.



The Volunteer Board



CAROLYN CROSSLEY
CHAIR



TONY WOLFE
VICE CHAIR



ALISON EDGAR
TREASURER



STEPHEN ANGUS
SECRETARY



ALEX ARBUTHNOT
GENERAL MEMBER



CHRIS BARFOOT
GENERAL MEMBER



DARYL BROOKE
GENERAL MEMBER



ROB DIMSEY
GENERAL MEMBER



DR JO MCCUBBIN
GENERAL MEMBER



DR JESS REEVES
GENERAL MEMBER



ALISON TAYLOR
GENERAL MEMBER



ADAM TYSON
GENERAL MEMBER



Retired Board Members

Lorraine Bull
Rosemary Cousin
Bernard Rawley

The GCCN Team



DARREN MCCUBBIN
CEO



ESTHER LLOYD
SMART SPECIALISATION



ASH HALL
BOARD ADVISOR



BAHER ZAGHLOOL
BOARD ADVISOR



DAVID HOOD
BOARD ADVISOR



MICHELLE ISLES
NEW ENERGY



TIFFANY HARRISON
GACA



FYBIAN CHAKAODZA
COMMUNICATIONS



IAN SOUTHALL
RED TRAILER CREW



DAN CAFFREY
RED TRAILER CREW



BRENTEN PETERS
FEDERATION UNI
INDUSTRIAL PLACEMENT



2022-3 Team
Ian Southall,
Sherryn Vardy,
Chris Barfoot,
Esther Lloyd, Beth
Ripper, Tiffany
Harrison Tammy
Logen, Darren
McCubbin

2023 Snapshot

Networks

Voices of the Valley
The Next Economy
Morwell Innovation Centre
Food & Fibre Gippsland
Gunaikurnai Land & Waters
Aboriginal Corporation
Committee for Gippsland
Energy Innovation
Co-operative
Bunyip Renewables
Action Group



7 AFFORDABLE AND
CLEAN ENERGY



Media

Radio and TV
Bloomberg News
Film: Tony Wolfe in
Planet Wind &
Power On



Participated in

Conferences 10
Panellists/Presenters 34
Stakeholder meetings 12
Working Group meetings 60
Committees 5
Workshops 15

Team Training

Socially Responsible
Renewable Energy
Development
Foundations of Directorship
Mental Health
First Aid



Engagement

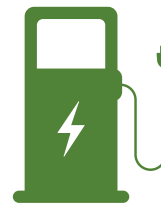
Renewable
Demonstration Trailer
Students 820
Community Event
Contacts 1580

13 CLIMATE
ACTION



Projects

Gippsland New
Energy Conference
Gippsland New Energy
Web Portal
Ev Expo's 4
Ev Chargers installed 7
Floating solar 50kw
Roof top solar 280kw
Reclaimed PV 2kw



Advocacy

Local, State
and Federal
Government
New Energy
Proponents



Finance

Treasurer's Report



While GCCN has recorded a deficit in 2022-23 and a decrease in assets, the organisation is still well equipped to meet its financial obligations. For the second year in a row GCCN has earned \$1million in income, and as with past years 2022-23 saw old projects completed, new projects commence, and funds secured to ensure ongoing work into 2023-24.

GCCN has \$0.989 million in cash holdings as of 30 June 2023, with \$627,000 held as revenue in advance for 2023-24 projects, namely the incomplete EV Charger installations sponsored by AGL, sales of tickets for the 2023 New Energy Conference, and continuation of programs of work funded by government project grants. While GCCN recorded a 10% decrease in both total and cash assets on 30 June 2023 compared to the previous year, the organisation is in a positive position with \$1.54 in cash or current assets for every \$1 of current or revenue in advance liabilities meaning it can more than meet its obligations.

GCCN Statement of Financial Position outlines these assets and liabilities in detail.

\$156,000 deficit was recorded in 2022-23 with a three percent or \$39,000 reduction in income, and 61%, or \$469,000 increase in expenses. While GCCN recorded a 144% decrease in net position compared to the previous year, a large portion of this was due to the finalisation of the Powerhub and Biomass projects which recorded a \$259,000 surplus in 2021-22 and an equivalent deficit in 2022-23. Delayed completion of financial milestones against the Lardner Park floating solar project also contributed to the deficit. Meanwhile, surpluses were recorded against general administration of GCCN, the New Energy Conference 2022 and Gippsland Alliance for Climate Action.

GCCN has long relied on income from government project grants and corporate sponsorships and recorded significant change in income composition in 2022-23. In the four previous years over 90% of all income came from government grants or corporate sponsorship. In 2022-23 GCCN received 77% of income from grants or sponsorship worth over \$834,000 and 23% of income from sales for the 2022 New Energy Conference and fees charged for administration of projects worth over \$247,000. Diversification in income represents improved financial sustainability, reduced volatility, and is a positive step forward for GCCN.

Details are provided in the GCCN Income and Expenditure Statement. A project-based income and expenditure statement can be found at the end of Appendix 2.

The Gippsland Renewable Fund has added one lease to the scheme during 2022-23 and has over \$96,000 in cash for potential reinvestment as of 30 June 2023, a \$25,000 increase from 30 June 2022. Having built additional cash reserves from repayment of leases GCCN is in a position to further invest in other organisations' renewable energy assets during 2023-24.

GCCN Financial Statements have been audited in accordance with Australian Charities and Not-for-profits Commission Regulations 2022 and the auditor's report can be found at Appendix 1 of this report. GCCN Financial Statements include statements of financial position, income and expenditure, changes in equity, cash flows, and accompanying notes. They can be found at Appendix 2 of the Annual Report.

GCCN Partnerships

Gippsland New Energy Conference

Wed August 30th to Sat September 2nd 2023

Following on from the resoundingly successful two-day Gippsland New Energy Conference last year, GNEC 23 was expanded to cover even more content and reach new audiences.

It kicked off with the Gippy Youth New Energy Summit, followed by two days of energy conference located this year at the Wellington Shire's energy smart buildings of the Port of Sale Precinct, and wrapped up with an open community day and eV expo.

Conversations again turned to discussions around the opportunities brought forth by 10GW of planned offshore wind, how we can secure supply chains for developments and how we can bring communities along on this decarbonisation journey.

This year we introduced a suite of breakout sessions that covered, working with Traditional Owners, future workforce, community energy, circular economy, the agricultural sector, hydrogen, geothermal, carbon capture, large-scale energy storage, as well as ports and transport connections among other topics.



[GNEC23 Report](#) 



GCCN Partnerships

Gippsland New Energy Conference

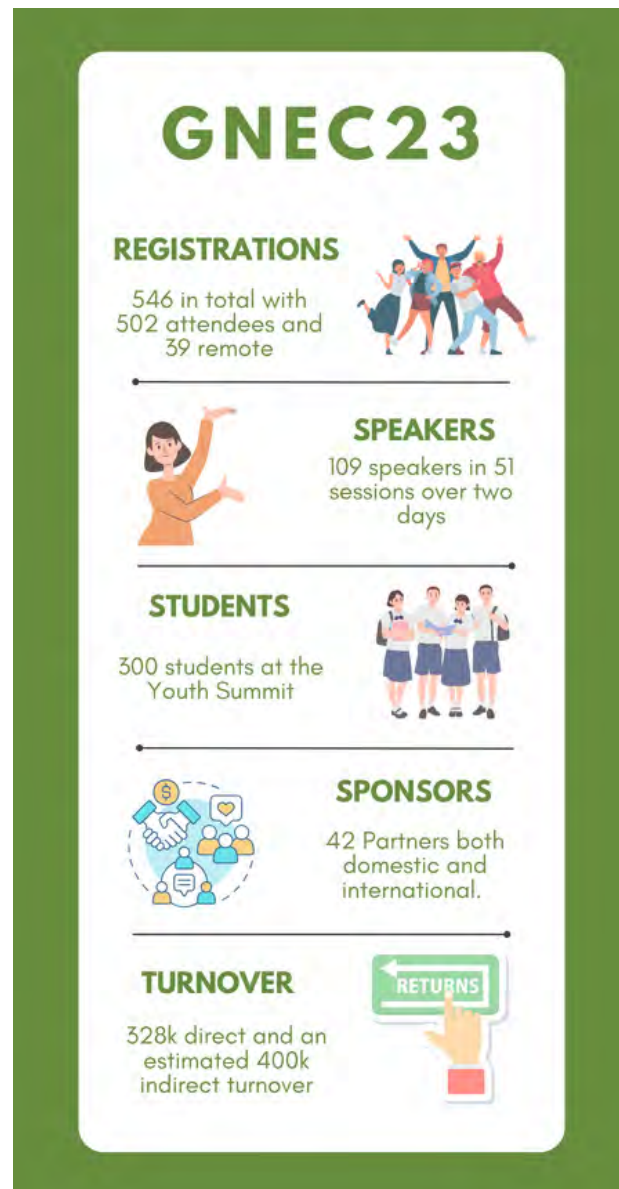
The event was made possible by many months of effort from several multi-agency working groups lead by GCCN. We extend our gratitude to the Wellington Shire for their exceptional hospitality and express our appreciation for the expertise of the Latrobe Valley Authority, the local team from the Department of Energy, Environment, and Climate Action, as well as the dedicated individuals from various parts of the state. Special thanks also go to the professional team at Nanoo Nanoo for their exceptional event management and the Tinamba Hotel for catering the event.

With their invaluable support, we take pride in having developed the largest conference of its kind in a regional area. We eagerly anticipate your participation at GNEC24, scheduled to take place in Latrobe City during September 2024.

Darren McCubbin, CEO GCCN



The 2023 conference numbers



GCCN Partnerships

Gippsland Smart Specialisation (GS3)



GCCN and the Latrobe Valley Authority (LVA) have continued to explore the application and practice of Smart Specialisation across Gippsland, as well support the delivery of the Latrobe Valley and Gippsland Transition Plan.

There was more international interest in Gippsland's energy transition journey this year. A visiting Vietnamese Parliamentarian Delegation in August, saw the LVA and GCCN presenting on topics covering shared community vision development, technological opportunities, and economic investment, among other considerations.

Community energy remained a key focus area across the networks, particularly in finding innovative ways to keep momentum going for communities who had previously undertaken microgrid, virtual power plant and resilient energy centre feasibility studies but still faced project challenges. New communities were engaged and connected into the networks, including many native timber townships currently undergoing transition. There was also some engagement and space created for community conversations around proposed large-scale energy transition infrastructure, particularly from local farming representatives.

Stakeholder workshops explored mobile renewable energy systems, alternative battery technology, local manufacture and system deployment. Their potential application in building community energy resilience or supporting emergency service operations was seen as a crucial regional opportunity. Other interest areas this year centered around improving community energy literacy, potential co-location for emerging tidal energy technology, as well as numerous discussions about establishing a new or reactivated community energy hub model.

The bioenergy innovation network was also busy this year with several areas of work being explored. One opportunity is a Macalister Irrigation District biohub based around anaerobic digestion. Another was how pyrolysis could play a role in Gippsland's emerging bioeconomy, along with feedstock demands, products, markets, workforce capability and supply chain considerations. There have also been conversations around the role of new broiler farms utilising onsite biogas, in addition to the potential for biomethane usage in the broader gas transition.

Further geothermal studies were undertaken this year and continue to build the collective understanding of the challenges still to be overcome for industrial usage of this net-zero emission resource.

Esther Lloyd, Gippsland Smart Specialisation Project Manager



Gippsland Alliance for Climate Action (GACA)

The first year of operation for the Gippsland Alliance for Climate Action was a success. Five councils are now part of the Alliance: East Gippsland, Latrobe City, South Gippsland, Wellington, with the most recent member Baw Baw Shire Council. GACA works with member councils to deliver regional climate mitigation and adaptation projects and provides a key platform for collaboration between councils. The Alliance has a clear direction and six main projects for the year, based on the Strategic and Action Plan that was created in late 2022. The GACA Project Working Group has submitted a grant application for the climate risk mapping work, developed a staff survey to support the Local government EV Fleet Transition Plan. The emissions monitoring project successfully identified and supported procurement of emissions monitoring and utilities management software, with GACA securing a 17% cost saving for councils.

GACA has also collaborated with Victorian Greenhouse Alliances on projects including the Regional Greenhouse Alliances Neighbourhood Battery Initiative, with a successful grant to develop battery business cases for participating councils; and the Business Renewables Buying Group, which will support large energy consuming businesses to participate in a Power Purchase Agreement.

GACA has also been engaged in advocacy, working with the other Alliances on policy submissions on reforms such as the National Gas Strategy, the National Health and Climate Strategy, and the Safeguard Mechanism; as well as meetings to discuss important regional issues such as the \$2b Regional Package, and regional transition opportunities with the National Net Zero Authority.

The National Net Zero Authority will work with state, territory and local governments, existing regional bodies, unions, industry, investors, and First Nations groups to help key regions, industries, employers, and others proactively manage the transformation to a clean energy economy.

GCCN auspices GACA with funding support from the State Labor Government via the Department of Energy, Environment and Climate Action (DEECA).

Tiffany Harrison, GACA Coordinator



Inaugrula team members



GCCN Initiatives

Engage Gippsland New Energy

Gippsland Climate Change Network onboarded a dedicated Senior Advisor – New Energy in December 2022. This position was funded by Latrobe Valley Authority with a focus on boosting Gippsland coordination effort in engagement, advocacy and sustainable development.

Gippsland New Energy Coordination Meetings

GCCN was strongly represented by the CEO Darren McCubbin and Senior Advisor - New Energy Michelle Isles at regional New Energy Coordination monthly meetings chaired by the Latrobe Valley Authority and Regional Development Victoria. As the only non-government organisation participant, GCCN progressed and supported collaboration between government agencies and encouraged joint decision making and reporting. To inform monthly sharing, GCCN advised on local economic and readiness strategies, transmission engagement, proponent briefings and provided active membership and contribution to a regional benefit sharing working group established in partnership with the Latrobe Valley Authority.

Learning and Development/Social Benefit

GCCN sponsored the Senior Advisor – New Energy through the Socially Responsible Renewable Energy Development short course program delivered by Community Power Agency and Griffith University. The Senior Advisor directly applied the knowledge gained in the development of engagement and benefit sharing models and presented investment models to an audience of 50 proponents and local stakeholders. The Senior Advisor met with all offshore wind proponent teams, advocating for coordinating community benefit schemes investment in skills and development.

Wellington Renewables Forum

The Senior Advisor co-chaired the Wellington Renewables Forum for six months securing speakers and facilitating discussion with the 250 members of the online community. The Senior Advisor initiated a survey of participants to assess current content and focus and provided extensive recommendations to the Wellington Shire Council.



Engagement on Transition



GCCN Initiatives

Engage Gippsland



Engagement on Transition

GCCN hosted Mark Wakeham, Churchill Fellow, and local leaders currently and previously involved in transition from coal-fired power in the Latrobe Valley. Mark shared examples from his international travel focused on understanding the mechanisms for change and the supply chain needs of developing renewable energy regions. Local leadership from AGL and Energy Australia shared clear plans for transitioning current infrastructure and workforces with the clarity of closure dates. Participants that filled the Morwell Innovation Centre and participants online engaged in a robust and respectful conversation that emphasised the feasibility and need for just transition, fast.

Gippsland New Energy Web Portal

A key deliverable for the Gippsland New Energy Coordination group and GCCN as auspice was a New Energy Web Portal designed by Gippslanders, for Gippslanders, to tell the story of our new energy journey. GCCN brought together a diverse working group in early 2023 to co-design the portal. Members included funding partners the Latrobe Valley Authority, the Department of Energy Environment & Climate Action – through VicGrid and Offshore Wind Victoria, Latrobe City Council, Wellington Shire Council and in-kind support from Gunaikurnai Land and Waters Corporation. South Gippsland Shire, Corio, GreenLab Futures and Excellence Pathways were active participants of the working group.

The working group appointed GippsTech to develop the portal with the group, ready for launch at the Gippsland New Energy Conference. Their design and content drew together insights from engagement of working group members and user insights gained from public engagements.

The Gippsland New Energy portal brings together easy to understand information about types of renewable energy technologies and the location of proposed infrastructure developments in Gippsland. It will connect information about cultural and environmental considerations, community engagement opportunities and local skills and training for participation.

The Gippsland New Energy portal will be a key platform for engagement in 2023-24: www.gippslandnewenergy.com.au

Michelle Isles, GCCN Senior Advisor New Energy



GCCN Initiatives

Engage Gippsland

Renewable Energy Demonstration Trailer

The GCCN Renewable Energy Demonstration Trailer (RED Trailer) program promotes renewable energy options and raises new energy awareness in schools, at community events and festivals across Gippsland. We acknowledge the continued support of AGL in the assistance with the trailer upgrade in 2022.

Throughout the year our RED Trailer Crew, Ian Southall and Dan Caffrey have been engaging with primary and secondary students and the general public explaining how they can be involved in the new energy jobs and how to electrify their homes for both economic and environmental returns.



MARCH 26 to 28
Farmworld
 Interacted with
 over **250**
 general public

JUNE 21
BugBlitz
 Interacted with
 over **120** school
 students

JULY 25
**Lardner Park
 Schools Expo**
 Interacted with
 over **100** school
 students

DECEMBER 3
**Fosters
 Farmers Market**
 Interacted with
 over **200**
 general public

**TOTAL
 NUMBERS**
820
 school students
1580
 general public



GCCN Initiatives

Energise Gippsland

eV Expos

With over 1000 visitors, and showcasing both new and personally owned vehicles, the four GCCN Gippsland EV Expos in Bairnsdale, Traralgon, Sale and Morwell created opportunities for Gippslanders to see, explore and understand the transition to electric vehicles.

In an open and friendly environment these events encourage eco-conscious choices and showcase the benefits of electric transport including cars, light commercial and ebikes. By including a wide range of electric vehicles, residential solar and EV charging installers in the mix, GCCN has showcased the range of sustainable energy solutions while making the expos more informative and engaging.

Attendance at the expo's demonstrated the interest in the community of transitioning to EV's and highlighted that people are seeking information to help inform and aid them in this transition. Given the community interest and to aid the uptake of EV's there would be benefits in GCCN running more Expo's in 2024.

The events were supported by AGL, local Rotary Clubs and the Sale expo was part of GNEC23 Community Day supported by Iberdrola Australia all ably delivered by **Carina Turner GCCN Gippsland EV Expo Organiser.**

GIPPS
LAND **EV** EXPO



GCCN Initiatives

Energise Gippsland

Latrobe Valley Energy and Growth Fund (LVEGF).

Last year we reported that we were successful in getting funding for two major projects in the Latrobe Valley. The first was a 275kW solar installation at Yallambe Aged care in Traralgon which was completed late last year and has delivered significant savings to the facility.

The other project was to install a 50kW Floating Solar array at Lardner Park. This proved far more complex due to the significant studies needed before a design could be finalised and then the process of procuring these items from overseas also proved challenging.

Finally with the assistance of RACV Solar the project has been delivered and is now in operation.

The system is now being expanded to include LED lighting and a fountain inside the lake making it a centre of attention for the site.

This demonstration site will be made available for inspection by other interested groups such as agricultural organisations and mine rehabilitation regulators.

eV Chargers

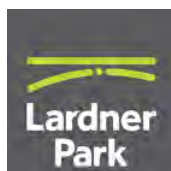
In Partnership with AGL we have been rolling out a number of EV chargers making it even easier to travel within and own an electric vehicle in Gippsland.


As part of this we have delivered:

- **4 chargers at Lardner Park**
- **2 chargers at the Churchill Innovation Centre**
- **1 charger at the Baw Baw Food Hub in Warragul**

And we are finalising the design and charger selection for another five sites.

Chris Barfoot, GCCN Energise Gippsland Project Officer



[Energise Gippsland Floating Solar](#) 



Appendix 1



To the Committee Members of

GIPPSLAND CLIMATE CHANGE NETWORK INC

Opinion

We have audited the financial report of GIPPSLAND CLIMATE CHANGE NETWORK INC (the Entity), which comprises the statement of financial position as at 30 June 2023, the statement of comprehensive income, statement of changes in equity and statement of cash flows for the year then ended, and notes to the financial statements.

In our opinion, the accompanying financial report presents fairly, in all material respects, the financial position of the Entity as at 30 June 2023, and (of) its financial performance and its cash flows for the year then ended in accordance with the financial reporting requirements of the applicable legislation.

Basis for opinion

We conducted our audit in accordance with Australian Auditing Standards. We are independent of the Entity in accordance with the ethical requirements of the Accounting Professional and Ethical Standards Board's APES 110 *Code of Ethics for Professional Accountants* (the Code) that are relevant to our audit of the financial report in Australia. We have also fulfilled our other ethical responsibilities in accordance with the Code.

We believe that the audit evidence we have obtained is sufficient and appropriate to provide a basis for our opinion.

Responsibilities of management and those charged with governance for the financial report

Management is responsible for the preparation and fair presentation of the financial report in accordance with the financial reporting requirements of the applicable legislation and for such internal control as management determines is necessary to enable the preparation and fair presentation of a financial report that is free from material misstatement, whether due to fraud or error.

In preparing the financial report, management is responsible for assessing the Entity's ability to continue as a going concern, disclosing, as applicable, matters relating to going concern and using the going concern basis of accounting unless management either intends to liquidate the Entity or to cease operations, or has no realistic alternative but to do so.

Those charged with governance are responsible for overseeing the Entity's financial reporting process.

Auditor's responsibilities for the audit of the financial report

Our objectives are to obtain reasonable assurance about whether the financial report as a whole is free from material misstatement, whether due to fraud or error, and to issue an auditor's report that

03 5622 1947

PO Box 1354 - 6A Victoria St - Warragul VIC 3820

reception@gafs.com.au www.gafs.com.au

ABN: 85 624 957 348



Liability limited by a scheme approved under Professional Standards Legislation

Appendix 1

Continued

includes our opinion. Reasonable assurance is a high level of assurance but is not a guarantee that an audit conducted in accordance with the Australian Auditing Standards will always detect a material misstatement when it exists. Misstatements can arise from fraud or error and are considered material if, individually or in the aggregate, they could reasonably be expected to influence the economic decisions of users taken on the basis of this financial report.

A further description of our responsibilities for the audit of the financial report is located at the Auditing and Assurance Standards Board website at: <http://www.auasb.gov.au/Home.aspx>. This description forms part of our auditor's report.

Kind regards,



John Mecklenburgh
SMSF Auditor | CPA | Registered Tax Agent

23 November, 2023

Appendix 2



Gippsland Climate Change Network Financial Statements 2023

Financial declaration of the Gippsland Climate Change Network Incorporated Board

In the opinion of the Board of the Gippsland Climate Change Network Incorporated:

- (a) there are reasonable grounds to believe that the Gippsland Climate Change Network Incorporated is able to pay all of its debts, as and when they become due and payable; and
- (b) the financial statements and notes satisfy the requirements of the *Australian Charities and Not-for-profits Commission Act 2012*.

Signed in accordance with subsection 60.15(2) of the *Australian Charities and Not-for-profit Commission Regulation 2022*.

A handwritten signature in black ink, appearing to read "Carolyn Crosley".

Carolyn Crosley
Chairperson

A handwritten signature in black ink, appearing to read "Alison Edgar".

Alison Edgar
Treasurer

Dated this 25th day of November 2023

Appendix 2

Continued

Statement of Financial Position

Gippsland Climate Change Network Incorporated
As at 30 June 2023

Account	Notes	30 Jun 2023	30 Jun 2022	Var (\$)	Var (%)	
Assets						
Bank						
Community Access		872,213	1,007,438	(135,225)	-13%	↓
Renewables Fund		96,312	70,880	25,432	36%	↑
Weel Expenses Account		661	0	661	-	↑
Total Bank		969,186	1,078,318	(109,132)	-10%	
Current Assets						
Accounts Receivable		81,926	72,762	9,164	13%	↑
Total Current Assets		81,926	72,762	9,164	13%	
Fixed Assets						
Equipment	2	30,766	31,965	(1,199)	-4%	↓
Less equipment depreciation	3	(7,846)	(2,865)	(4,981)	-174%	↓
Total Fixed Assets		22,920	29,100	(6,180)	-21%	
Renewable Fund Assets						
Renewable fund leases	4	206,072	195,573	10,500	5%	↑
Less lease repayments	5	(122,115)	(83,316)	(38,799)	-47%	↓
Total Renewable Fund Assets		83,957	112,257	(28,299)	-25%	
Total Assets		1,157,989	1,292,436	(134,447)	-10%	
Liabilities						
Current Liabilities						
Accounts Payable		2,647	893	1,755	197%	↑
Payroll liabilities	6	9,548	8,806	741	8%	↑
Tax Payable	7	44,279	76,650	(32,371)	-42%	↓
Total Current Liabilities		56,474	86,349	(29,875)	-35%	
Revenue received in advance						
Revenue received in advance - state government	8	120,000	340,909	(220,909)	-65%	↓
Revenue received in advance - corporate partner	8	250,000	150,000	100,000	67%	↑
Revenue received in advance - sales	8	257,345	85,000	172,346	203%	↑
Total Revenue received in advance		627,346	575,909	51,437	9%	
Total Liabilities		683,819	662,258	21,561	3%	
Net Assets		474,170	630,178	(156,009)	-25%	
Equity						
Current Year Earnings		(156,009)	352,220	(508,229)	-144%	
Retained Earnings		630,178	277,958	352,220	127%	
Total Equity		474,170	630,178	(156,009)	-25%	

Appendix 2

Continued

Statement of Income and Expenditure

Gippsland Climate Change Network Incorporated
For the year ended 30 June 2023

		2022-23	2021-22	Var (\$)	Var (%)
Income					
	Notes				
Grants - Government/Corporate	9	834,331	1,098,703	(265,372) ↓	-24% ↓
Sales income	10	131,672	8,225	123,447 ↑	1,501% ↑
Fees and Subscriptions	11	115,718	12,646	103,073 ↑	815% ↑
Interest Income		805	838	(33) ↓	-4% ↓
Donations		0	81	(81) ↓	-100% ↓
Other revenue		0	194	(194) ↓	-100% ↓
Total Income		1,082,526	1,121,696	(39,170)	-3%
Expenses					
Employee expenses	12	437,923	387,831	50,092 ↑	13% ↑
Project expenses	13	700,857	292,667	408,191 ↑	139% ↑
Renewable Fund	14	2,811	54,989	(52,178) ↓	-95% ↓
Administrative expenses	15	89,629	31,124	58,505 ↑	188% ↑
Depreciation		7,315	2,865	4,449 ↑	155% ↑
Total Expenses		1,238,535	769,476	469,059	61%
Surplus (Deficit)		(156,009)	352,220	(508,229)	-144%

Statement of Changes in Equity

Gippsland Climate Change Network Incorporated
For the year ended 30 June 2023

Equity

Balance as at 30 June 2021	277,078
Net result for year	353,100
Balance as at 30 June 2022	630,178
Net result for year	(156,009)
Balance as at 30 June 2023	474,170

Appendix 2

Continued

Statement of Cash Flows

Gippsland Climate Change Network Incorporated
For the year ended 30 June 2022

Account		2022-23	2021-22
Operating Activities			
	Notes		
Cash receipts from government and corporate partnerships	16	654,492	1,331,325
Cash receipts from other operating activities (excluding partnerships)	17	315,996	39,837
Renewable fund revenue received	18	4,434	1,947
Interest received		805	838
Payments to suppliers and employees	19	(1,110,853)	(715,831)
Net Cash Flows from Operating Activities		(135,126)	658,116
Investing Activities			
Proceeds from sale of equipment		0	0
Payment for equipment	20	(1,135)	(31,965)
Proceeds for renewable fund	21	37,628	74,925
Payment for renewable fund	22	(10,500)	(106,073)
Net Cash Flows from Investing Activities		25,994	(63,113)
Financing Activities			
Other cash items from financing activities		0	880
Net Cash Flows from Financing Activities		0	880
Net Cash Flows		(109,132)	595,883
Cash and Cash Equivalents			
Cash and cash equivalents at beginning of period		1,078,318	482,436
Cash and cash equivalents at end of period		969,186	1,078,318

Appendix 2

Continued

Notes

1. Statement of accounting policies

This provides an overview of the accounting policies that have been applied to the financial records of Gippsland Climate Change Network (GCCN). These policies aim to meet our obligations under the *Australian Charities and Not-for-profits Commission Act 2012*.

Basis of Measurement

The financial statements have been prepared on an accrual basis and are based on historical cost and do not take into account changing money values except where specifically stated.

Equipment

Equipment is recorded at cost value less accumulated depreciation over time. These assets have different depreciation values applied over time.

Computer equipment

Computer devices bought in July and August 2021 were fully depreciated as at 30 June 2023, and retired with a value of \$0.

Computer device purchased January 2023 had \$535 depreciation applied on 30 June 2023, with a total of \$100 depreciation to be recorded monthly until December 2023. It will be retired with a value of \$0.

GCCN Trailer (Plant and Equipment)

The GCCN Renewable Energy trailer will have a useful life ending 30 June 2027. Depreciation of \$1,731 was applied to the trailer and its additions on 30 June 2022, with \$465 depreciation to be recorded monthly until 30 June 2027. It will be retired with a value of \$0.

Renewable fund assets and leases

During the installation of renewable fund equipment, it will be recorded as a fixed asset at the cost value, with no depreciation applied.

Once the installation has been completed and the leasing agreement commences, the cost value is recognised as a non-current asset "Renewable fund lease". The lessee will own the asset in full at the end of the lease period, and GCCN will have no further claim to it as an asset.

The lease payment made by the lessee will be recorded against two separate accounts: revenue sales; and, a cumulative credit to the renewable lease repayment asset. Some lessee, will also be the recipients of grants to assist the purchase. These grants have been applied in full as a credit to the renewable lease repayment asset account.

Each lease agreement has different terms, value, profit margin, grants and duration, and the proportion of revenue and asset credit must be calculated on a case by case basis. A breakdown of each lease it provided against notes 4 and 5.

The Renewable fund bank account is for exclusive use of the renewable fund program, and all profit is to be used for reinvestment into renewable fund projects only.

Appendix 2

Continued

Income tax

GCCN is a not-for-profit and registered charity and is exempt from income tax under section 50-45 of the *Income Tax Assessment Act 1997*.

Revenue and Revenue in advance

Revenue is measured at the fair value of the consideration received or receivable.

Donation income is recognised when the entity obtains control over the funds, which is generally at the time of receipt.

In line with AASB 15 and AASB 1058, GCCN recognises revenue received in advance as a liability. Application of these standards is explained here in further detail.

- Grants from government are measured as revenue at the time that a contract milestone is achieved. Until that time, they are recorded as a revenue in advance liability.
- Corporate sponsorships are measured as revenue at the time that a project commences, and the first expenses are incurred. Until that time, they are recorded as a revenue in advance liability.
- Event sales are measured as revenue at the time that a project commences, and the first expenses are incurred. Until that time, they are recorded as a revenue in advance liability.

Goods and services tax (GST)

Revenues, expenses and assets are recognised net of the amount of GST, except where the amount of GST incurred is not recoverable from the Australian Taxation Office (ATO). In these circumstances the GST is recognised as part of the cost of acquisition of an asset or as part of an item of expense. Receivables and payables are stated inclusive of GST.

Key management personnel compensation and related party transactions

Compensation to key management personnel and related party transactions are disclosed in line with requirements outlined for Not-for-Profit Tier 2 Entities under AASB 124 and AASB 1060.

Appendix 2

Continued

2 Equipment

	30-Jun-23	30-Jun-22
	\$	\$
Computer Equipment	1,135	2,334
Plant and Equipment	29,631	29,631
Total Equipment	30,766	31,965

3 Less equipment depreciation

	30-Jun-23	30-Jun-22
	\$	\$
Less Accumulated Depreciation on Computer Equipment	(535)	(1,134)
Less Accumulated Depreciation on Plant and Equipment	(7,311)	(1,731)
Total Less equipment depreciation	(7,846)	(2,865)

4 Renewable fund leases

	30-Jun-23	30-Jun-22
	\$	\$
Renewable fund lease - Baw Baw food hub	16,483	16,483
Renewable fund lease - Briagalong pony club	10,500	0
Renewable fund lease - Earthworker	18,822	18,822
Renewable fund lease - Latrobe Racing club	34,195	34,195
Renewable fund lease - Neerim South Hospital	115,877	115,877
Renewable fund lease - Sale Neighbourhood house	10,196	10,196
Total Renewable fund leases	206,072	195,573

5 Less lease repayments

	30-Jun-23	30-Jun-22
	\$	\$
Less Renewable fund lease - Baw Baw food hub repayment	(7,684)	(4,751)
Less Renewable fund lease - Briagalong pony club repayment	(8,603)	0
Less Renewable fund lease - Earthworker repayment	(14,063)	(9,304)
Less Renewable fund lease - Latrobe Racing Club repayment	(13,678)	(6,839)
Less Renewable fund lease - Neerim South Hospital repayment	(70,398)	(56,404)
Less Renewable fund lease - Sale Neighbourhood house repayment	(7,689)	(6,018)
Total Less lease repayments	(122,115)	(83,316)

6 Payroll liabilities

	30-Jun-23	30-Jun-22
	\$	\$
Superannuation Payable	9,548	8,806
Total Payroll liabilities	9,548	8,806

Payroll liabilities include outstanding superannuation payable to employee funds. Outstanding payroll tax was been recorded against the ATO clearing account.

Appendix 2

Continued

7 Tax Payable

	30-Jun-23	30-Jun-22
	\$	\$
GST	7,323	6,569
ATO Clearing Account	36,956	70,081
Total Tax Payable	44,279	76,650

PAYG was recorded in ATO clearing account

8 Revenue received in advance

	30-Jun-23	30-Jun-22
	\$	\$
Revenue received in advance - state government*	120,000	340,909
Revenue received in advance - corporate partner#	250,000	150,000
Revenue received in advance - sales^	257,345	85,000
Total Revenue received in advance	627,346	575,909

*\$250,000 from Latrobe Valley Authority for continuation of the Smart Specialisation Project Manager, and a Gippsland New Energy Development Officer Received in 2021-22; \$60,000 remains on 30 June 2023 to extend Smart Specialisations to 31 December 2023

*\$90,909 from Department of Environment, Land, Water and Planning for establishment of the Gippsland Alliance for Climate Action in 2021-22; \$60,000 remains 30 June 2023 for continuation in 2023-24 and 2024-25

#\$150,000 from AGL for a community partnership to install electric vehicle chargers received in 2021-22, with project not finalised as at 30 June 2023.

#\$100,000 partnership funds received from AGL unspent as at 30 June 2023.

^\$85,000 in ticket sales as at 30 June 2022 for 2022 New Energy Conference.

^\$256,345 in ticket sales as at 30 June 2023 for 2023 New Energy Conference.

9 Grants - Government/Corporate

	2022-23	2021-22
	\$	\$
Corporate Sponsorship	5,000	65,255
Government Grant	797,676	823,247
Implementation Projects	0	211,201
Total Grants - Government/Corporate	834,331	1,099,703

10 Sales income

	2022-23	2021-22
	\$	\$
Sales	1,900	1,777
Solar Panel Rental Income	3,563	2,818
Business Saver Sales	0	3,630
Event sales	126,210	0
Total Sales income	131,672	8,225

Appendix 2

Continued

11 Fees and Subscriptions

	2022-23	2021-22
	\$	\$
Corporate Membership	0	12,000
Individual Membership	754	646
Fees & Charges - GCCN project management	74,964	0
GACA membership	40,000	0
Total Fees and Subscriptions	115,718	12,646

12 Employee expenses

	2022-23	2021-22
	\$	\$
Contract Salaries	23,625	60,466
Wages and Salaries	325,965	277,571
Superannuation	33,993	27,757
Workcover Expenses	5,358	1,173
Training	3,251	4,010
Travel Expenses	13,261	16,854
GCCN staffing - project work	32,470	0
Total Employee expenses	437,923	387,831

13 Project expenses

	2022-23	2021-22
	\$	\$
Consultant Services	80,726	56,424
Event Expenses	78,672	2,687
IR Project Expense	0	165,448
Project Expenses	498,965	59,294
Project Management Fee	0	6,625
Project Milestone Expense	0	2,189
Project auspice - GCCN auspicing fee	42,494	0
Total Project expenses	700,857	292,667

14 Renewable Fund

	2022-23	2021-22
	\$	\$
Admin Expenses	84	0
Equipment Expenses	0	3,625
Renewable fund - grant utilisation	2,727	51,364
Total Renewable Fund	2,811	54,989

Renewable fund grant utilisation records use of contributions from other organisations to contribute to the repayment of renewable fund leases

Appendix 2

Continued

15 Administrative expenses

	2022-23	2021-22
	\$	\$
Accounting Expenses	2,005	910
Administration Expenses	0	36
Bank Fees & Charges	430	89
Bookkeeping Expenses	3,000	3,315
Catering	12,007	4,612
Computer Expenses*	28,081	3,452
Entertainment	174	0
General Expenses	1,405	391
Insurance	3,991	3,147
Office Expenses	1,208	989
Postage	20	0
Promotion & Marketing	34,878	12,797
Telephone, Internet & Mobile	958	1,135
Subscriptions	1,417	250
Trailer ongoing costs	57	0
Total Administrative expenses	89,629	31,124

*Includes \$20,000 in New Energy portal set up expenses was recorded as "Computer expenses"

16 Cash receipts from government and corporate partnerships

	2022-23	2021-22
	\$	\$
Grants - Government/Corporate	9 990,881	1,099,703
Less Revenue in advance (previous years)	8 (490,909)	(279,287)
Opening Accounts Receivable Government/Corporate	18,500	20,000
Less Closing Accounts Receivable Government/Corporate	(23,980)	0
Revenue in advance - government/corporate	8 160,000	490,909
Total Cash receipts from government and corporate partnerships	654,492	1,331,325

17 Cash receipts from other operating activities (excluding partnerships)

	2022-23	2021-22
	\$	\$
Sales ex renewable fund	10 146,127	5,407
Less Revenue in advance (previous years)	(85,000)	0
Opening Accounts Receivable other operating	45,000	0
Less Closing Accounts Receivable other operating	(1,139)	0
Fees & Subscriptions	11 753	12,646
Donations	0	91
Other revenue	0	194
Revenue in advance - sales	8 256,345	85,000
Less Revenue in advance accounts receivable	(46,090)	(63,500)
Total Cash receipts from other operating activities (excluding partnerships)	315,996	39,837

Appendix 2

Continued

18 Renewable fund revenue received

	2022-23	2021-22
	\$	\$
Solar Panel Rental Income	3,563	2,818
Opening Accounts Receivable Rental income	871	0
Less Accounts receivable	0	(871)
Total Renewable fund revenue received	4,434	1,947

19 Payments to suppliers and employees

	2022-23	2021-22
	\$	\$
Employee expenses	(437,923)	(387,831)
Project Expenses	(699,721)	(292,667)
Renewable fund expenses	(2,811)	(54,989)
Administrative Expenses	(89,629)	(31,124)
Plus Accounts Payable	2,647	893
Plus Payroll liabilities	9,547	8,806
Plus Tax Payable	36,956	76,650
Less Tax Payable (previous year)	70,081	(35,570)
Total Payments to suppliers and employees	(1,110,853)	(715,831)

20 Payment for equipment

	2022-23	2021-22
	\$	\$
Computer Equipment	(1,135)	(2,334)
Plant and Equipment	0	(29,631)
Total Payment for equipment	(1,135)	(31,965)

21 Proceeds for renewable fund

	2022-23	2021-22
	\$	\$
Renewable lease fund repayment	38,799	83,316
Opening Accounts Receivable Rental repayments	8,391	0
Less Accounts receivable	(9,562)	(8,391)
Total Proceeds for renewable fund	37,628	74,925

22 Payment for renewable fund

	2022-23	2021-22
	\$	\$
Renewable fund assets	(206,072)	(195,573)
Plus Renewable fund assets value previous year	195,573	89,500
Total Payment for renewable fund	(10,500)	(106,073)

Appendix 2

Continued

23. Key Management Personnel Compensation

Key management personnel are the people with authority and responsibility for planning, directing and controlling the activities of GCCN, directly or indirectly, and include the GCCN Board and CEO.

	2022-23	2021-22
Total remuneration to key management personnel	\$94,919	\$101,699
Total key management personnel remunerated	2	2

24. Related party transactions

Related party transactions are those that have occurred between GCCN and entities controlled, in part or solely, by key management personnel or their close family members. Transactions with related parties are on normal commercial terms and conditions are no more favourable than those available to other persons unless otherwise stated.

a. Transactions with related parties

	2022-23	2021-22
Total value of related party transaction	\$40,670	\$5,000
Number of related party transaction	7	1

Name of related party(ies)	Description of transaction	Total (ex GST)
Regional Development Australia	Purchase of tickets Gippsland New Energy Conference 2022	\$545
Wellington Shire Council	Sponsorship to RCE Youth Summit	\$2,500
Wellington Shire Council	Gippsland Alliance for Climate Action Membership	\$10,000
Wellington Shire Council Regional Development Australia TAFE Gippsland	Purchase of tickets and Sponsorship of Gippsland New Energy Conference 2023	\$27,625

b. Other reportable items

GCCN had no outstanding balances, uncollectable receivables or bad or doubtful debts from related parties for the reporting period

Appendix 2

Continued

Statement of Income and Expenditure by project

Gippsland Climate Change Network Incorporated
For the year ended 30 June 2023

Account	2022-23	Admin	Biomass	New Energy Conference	Renewable Fund	Energise Gippsland	Gippsland Alliance for Climate Action	Power hub
Income								
Grants - Government/Corporate	834,331	356,614	0	0	5,291	416,517	55,909	0
Sales income	131,672	0	0	126,210	3,563	1,900	0	0
Fees and Subscriptions	115,718	75,718	0	0	0	0	40,000	0
Interest Income	805	722	0	0	83	0	0	0
Total Income	1,082,526	433,054	0	126,210	8,937	418,417	95,909	0
Expenses								
Employee expenses	437,923	248,544	32,470	14,529	0	35,924	53,217	53,239
Project expenses	700,857	1,292	21,425	74,736	9,820	463,164	6,795	123,625
Renewable Fund	2,811	0	0	0	2,727	84	0	0
Administrative expenses	89,629	38,180	0	19,942	0	2,839	883	27,785
Depreciation	7,315	535	0	0	0	6,780	0	0
Total Expenses	1,238,535	288,551	53,895	109,207	12,547	508,791	60,896	204,648
Surplus (Deficit)	(156,009)	144,503	(53,895)	17,003	(3,611)	(90,374)	35,013	(204,648)



www.gccn.org.au